



Introduction

The mission of Bartz-Altadonna Community Health Center is to provide patient-centered, high-quality, trauma-informed health and wellness services to all regardless of ability to pay.

OUR LOCATIONS

LANCASTER CLINIC

43322 Gingham Avenue
Lancaster, CA 93535

PALMDALE CLINIC

2520 E Palmdale Blvd Ste. A
Palmdale, CA 93550

LANCASTER ICB

43210 Gingham Avenue
Lancaster CA 93535

CAL-CITY CLINIC

9300 N Loop Blvd Ste. C
California City, CA 93505

BORON CLINIC

12560 Boron Ave
Boron, CA 93516

East Kern Health Care District 1/7/25



Services

Healthcare Services

- Adult & Pediatric Primary Care
- PCMH (Patient Centered Medical Home)
- OB/GYN
- Behavioral Health
- Psychiatry
- Vaccinations
- Rapid HIV/STD Testing
- Medical Case Management/ Linkages
- Nutrition/Dietary
- Mobile Health Clinic
- Podiatry
- Medication Assisted Treatment for substance use disorder (MAT)
- Support Groups
- Community Outreach
- Safety Net Enrollment Assistance
- Infectious Disease
- Hepatitis A&B Specialty Care
- HIV Specialty Care



Programs

Medical Case Management/Community Supports

PrEP & PEP (Pre & Post exposure prophylaxis)

HHSS (Housing Navigation and Tenancy support)

ECM (Enhanced Care Mgmt.)

Diabetes Education

Hypertension Education

MAT (Medication Assisted Treatment for substance use disorders)

Nutrition & Cooking Classes

Ryan White

LIFE (Low-Income Fare is Easy)



Programs

Enrollment Assistance

Medi-Cal Managed Care

Fam Pact

EWC (Every Woman Counts)

CHDP (Child Health & Development)

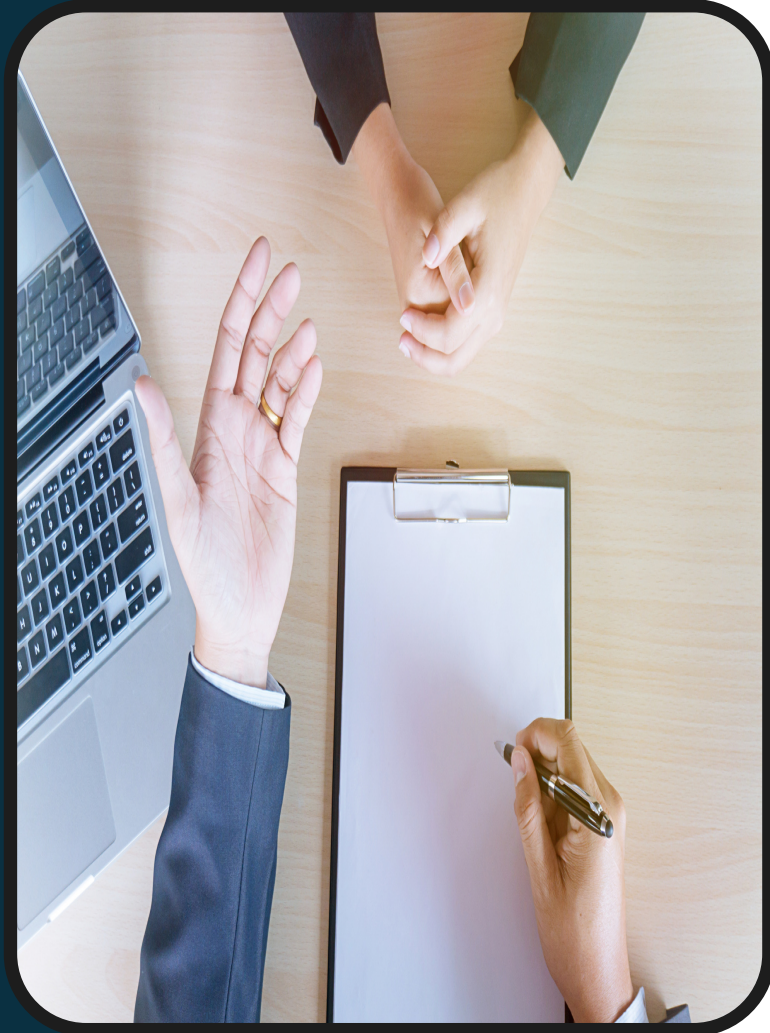
CalFresh

LIFE (Bus passes & taxi vouchers)

Veteran's Evaluation Services

HMIS

Ryan White



PrEP & PEP

PrEP: Pre-Exposure Prophylaxis

PrEP is a daily medication that can significantly reduce the risk of contracting HIV infection for individuals who engage in high-risk behavior that may expose them to the virus.

PEP: Post-Exposure Prophylaxis

PEP is a medication taken to prevent HIV after a possible exposure. PEP must be taken within 72 hours of possible exposure. PEP is not a replacement for PrEP or used for longer HIV prevention.



SUD & MAT

Substance Use Disorder Counseling & Medication Assisted Treatment

The use of medications in combination with therapy to provide a comprehensive approach to Substance Use Disorders



SUD/MAT

Medication Assisted Treatment

- Alcohol Use Disorder
- Opioid Dependency
- Opioid Overdose Prevention
- Smoking Cessation



ECM

Enhanced Care Management

- ECM is a whole-person, interdisciplinary approach to comprehensive care management.
- Addresses the clinical and non-clinical needs of high-cost, high-need managed care members.
- Uses systematic coordination of services that is community-based, interdisciplinary, high-touch, and person-centered.



Populations of Focus

- Patients with chronic illness, comorbidities, and complex medical history
- Homeless
- TAY
- Justice Involved
- Mental Health Illnesses & Substance Use Disorders
- Nursing Facility Residents
- Youth enrolled in CCS and/or Welfare
- High utilizers of avoidable ED services



Street Medicine

- Primary Care
- Community Referrals
- ECM Referrals
- Rapid HIV Testing
- Food & Water



Outreach Manager

Jason Hogan (661) 941-7197

jhogan@bachc.org

Outreach Coordinator & Community Health Worker

Saydi Lappe: (661) 499-5248

slappe@bachc.org

Outreach Coordinator & Peer Support Specialist

Pedro Mateo: (661) 974-4277

pmateo@bachc.org

Outreach Coordinator & Peer Support Specialist

Yolanda Jauregui

yjauregui@bachc.org

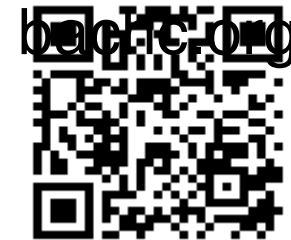
Outreach Coordinator & Peer Support Specialist

John Hunter

jhunter@bachc.org



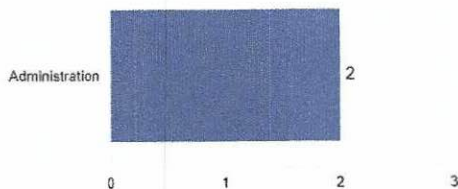
Thank you!



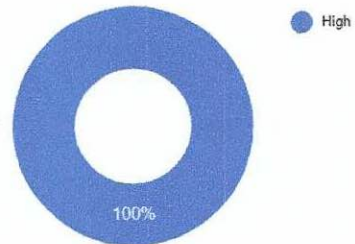
Shortcuts

- 
Intake Form
- 
Request Tracker

Open Requests by Department



Open Requests by Priority



Request	Description	Department	Assigned to	Start Date	End Date
Total		Count 2			
Department		Count Administration			
Status		Count In Progress			

Item 9B - 1



East Kern

HEALTH CARE DISTRICT

2025 District Meeting Calendar

January							February							March						
S	M	T	W	T	F	S	S	M	T	W	T	F	S	S	M	T	W	T	F	S
			1	2	3	4							1							1
5	6	7	8	9	10	11	2	3	4	5	6	7	8	2	3	4	5	6	7	8
12	13	14	15	16	17	18	9	10	11	12	13	14	15	9	10	11	12	13	14	15
19	20	21	22	23	24	25	16	17	18	19	20	21	22	16	17	18	19	20	21	22
26	27	28	29	30	31		23	24	25	26	27	28		23	24	25	26	27	28	29
														30	31					
April							May							June						
S	M	T	W	T	F	S	S	M	T	W	T	F	S	S	M	T	W	T	F	S
		1	2	3	4	5					1	2	3	1	2	3	4	5	6	7
6	7	8	9	10	11	12	4	5	6	7	8	9	10	8	9	10	11	12	13	14
13	14	15	16	17	18	19	11	12	13	14	15	16	17	15	16	17	18	19	20	21
20	21	22	23	24	25	26	18	19	20	21	22	23	24	22	23	24	25	26	27	28
27	28	29	30				25	26	27	28	29	30	31	29	30					
							30													
July							August							September						
S	M	T	W	T	F	S	S	M	T	W	T	F	S	S	M	T	W	T	F	S
		1	2	3	4	5						1	2		1	2	3	4	5	6
6	7	8	9	10	11	12	3	4	5	6	7	8	9	7	8	9	10	11	12	13
13	14	15	16	17	18	19	10	11	12	13	14	15	16	14	15	16	17	18	19	20
20	21	22	23	24	25	26	17	18	19	20	21	22	23	21	22	23	24	25	26	27
27	28	29	30	31			24	25	26	27	28	29	30	28	29	30				
							31													
October							November							December						
S	M	T	W	T	F	S	S	M	T	W	T	F	S	S	M	T	W	T	F	S
			1	2	3	4							1		1	2	3	4	5	6
5	6	7	8	9	10	11	2	3	4	5	6	7	8	7	8	9	10	11	12	13
12	13	14	15	16	17	18	9	10	11	12	13	14	15	14	15	16	17	18	19	20
19	20	21	22	23	24	25	16	17	18	19	20	21	22	21	22	23	24	25	26	27
26	27	28	29	30	31		23	24	25	26	27	28	29	28	29	30	31			
							30													

January 7,2025 EKHCD Regular Meeting

BACKGROUND:

EKHCD engaged Regional Government Services to provide support to the District through June 20, 2025. RGS notified EKHCD of their intention to cancel the contract effective January 10, 2025. EKHCD reached out to RGS for reconsideration, talked with legal counsel, and with Kern County District 2 Board of Supervisors member to determine best direction moving forward.

EKHCD convened an Ad Hoc committee and posted a High Priority public notice on the California Special Districts Forum. Five replies were received, and the field was narrowed to 2 potential candidates for interviews.

AD HOC COMMNITTEE RECOMMENDATION:

After virtual interviews, the Ad Hoc committee recommends that the most prudent decision to serve the immediate needs of the District, and to be the most cost effective, is to appoint Raychel Jackson as Board Secretary/Clerk effective January 10, 2025.

Raychel has 15+ years of work history with increasing responsibility levels. She has excellent analytical skills for business intelligence, data analysis, and ability to create plans for executive level decision making. She is also certificated as:

- CA Notary Public
- Paralegal
- Certified Board Clerk
- Certified Special District Manager

COMPENSATION:

\$50 per hour, with work time estimate at 10-20 hours per week.

NEXT STEPS:

- Proposal will be forwarded to Legal Counsel for review and editing process.
- Final version will be presented to Board during Regular Meeting on January 21, 2025,